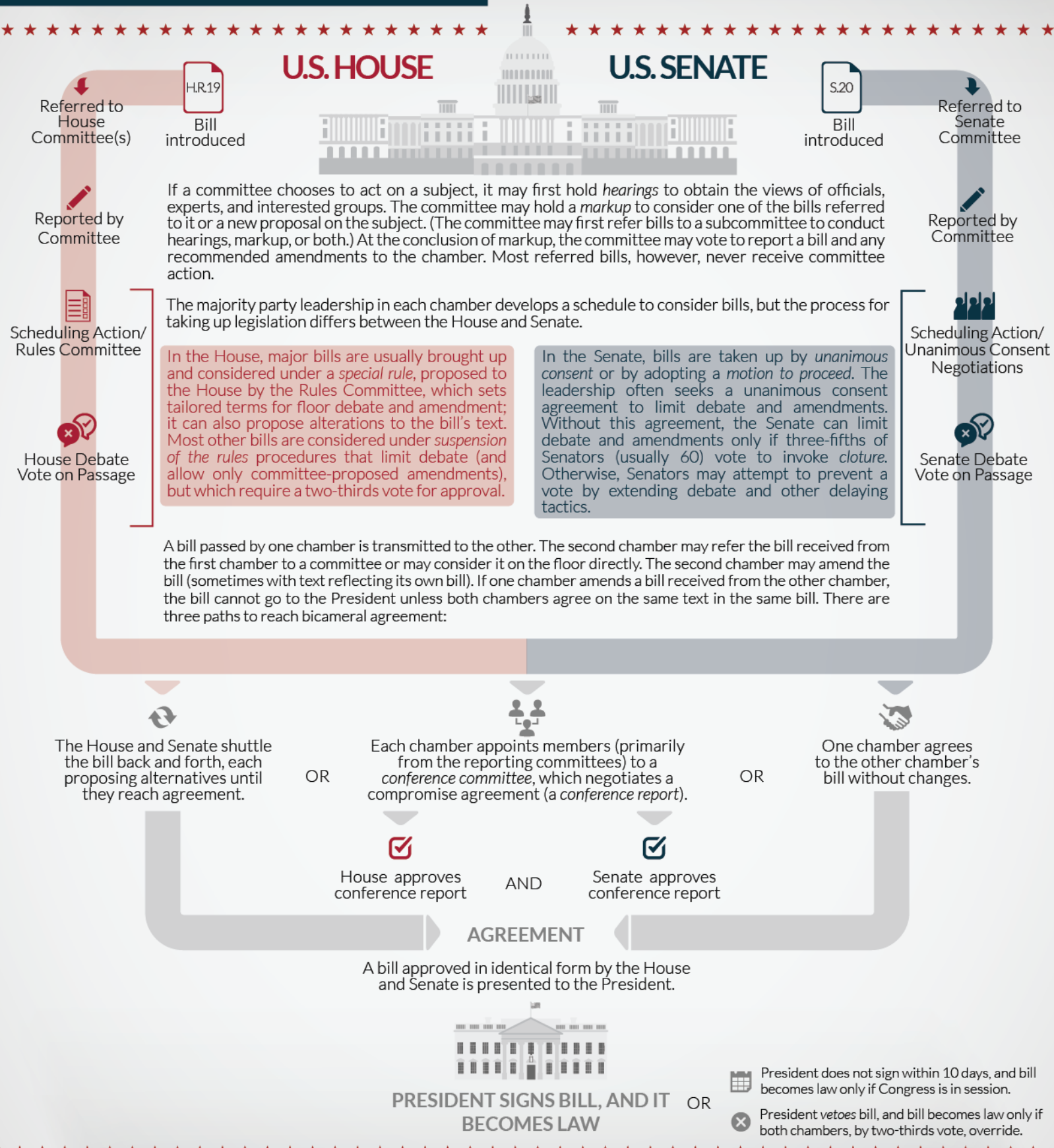


# FROM BILL *to* LAW

## Stages of the Legislative Process

Members of the U.S. House or Senate may introduce bills in their respective chamber. Upon introduction, a bill is normally referred to the committee with jurisdiction over its subject. Especially in the House, a bill may be referred to several committees. In the Senate, a bill is sometimes placed directly on the *Calendar*, a list of bills available for floor consideration.



## **Author Information**

Valerie Heitshusen  
Acting Section Research Manager

Jennifer E. Manning  
Senior Research Librarian

---

## **Disclaimer**

This document was prepared by the Congressional Research Service (CRS). CRS serves as nonpartisan shared staff to congressional committees and Members of Congress. It operates solely at the behest of and under the direction of Congress. Information in a CRS Report should not be relied upon for purposes other than public understanding of information that has been provided by CRS to Members of Congress in connection with CRS's institutional role. CRS Reports, as a work of the United States Government, are not subject to copyright protection in the United States. Any CRS Report may be reproduced and distributed in its entirety without permission from CRS. However, as a CRS Report may include copyrighted images or material from a third party, you may need to obtain the permission of the copyright holder if you wish to copy or otherwise use copyrighted material.